

Scheda Tecnica

Salsa Saga Noir

Compagnia: Qui e Ora

Lista materiale illuminotecnico:

12 PC 1000 watt con bandiere

3 Sagomatori 750w

6 Domino

Dimmer 12 Ch (3 kw per canale)

Gelatine 200,201,202 (lista su pianta luci)

Console 24/48 manuale

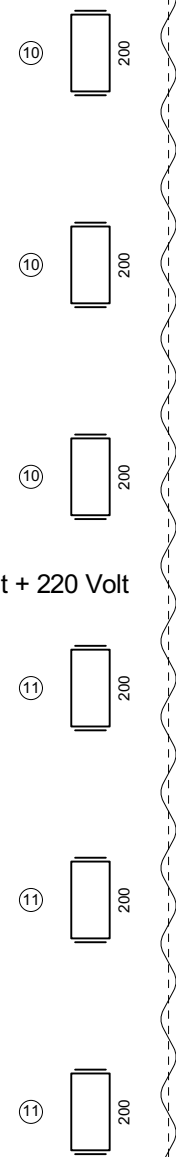
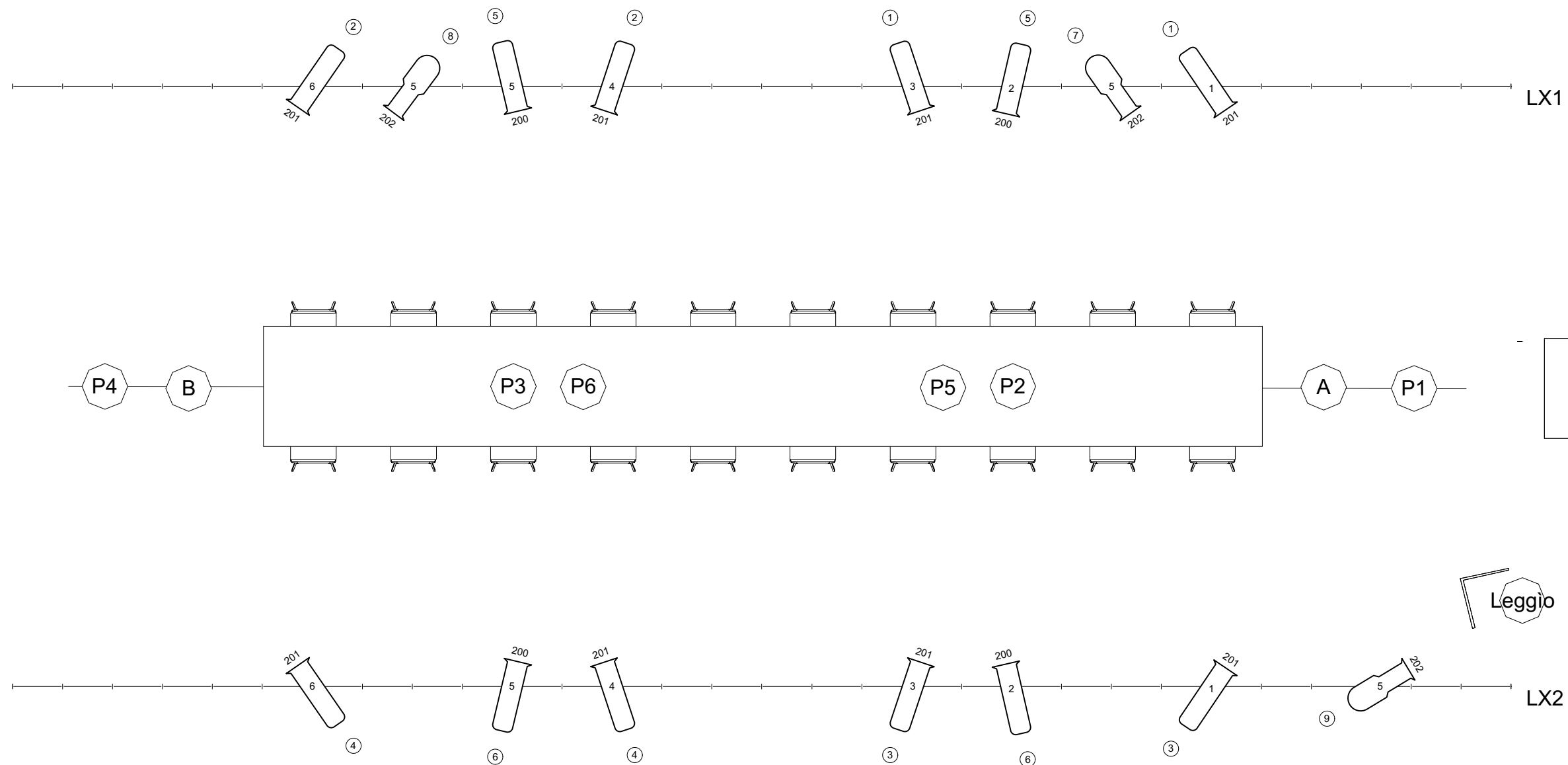
Lista materiale audio:

Impianto adeguato alla location

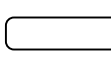
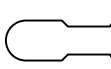
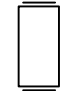
Un mixer audio per collegamento PC e cavi necessari, preferibile una D.I.Box stereo per il collegamento

Tempi montaggio scenografia: 2 ore

In allegato pianta luci, con eventuale adattamento per location dove si andrà a lavorare su WindUp.

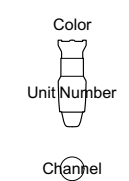


Corpi illuminanti

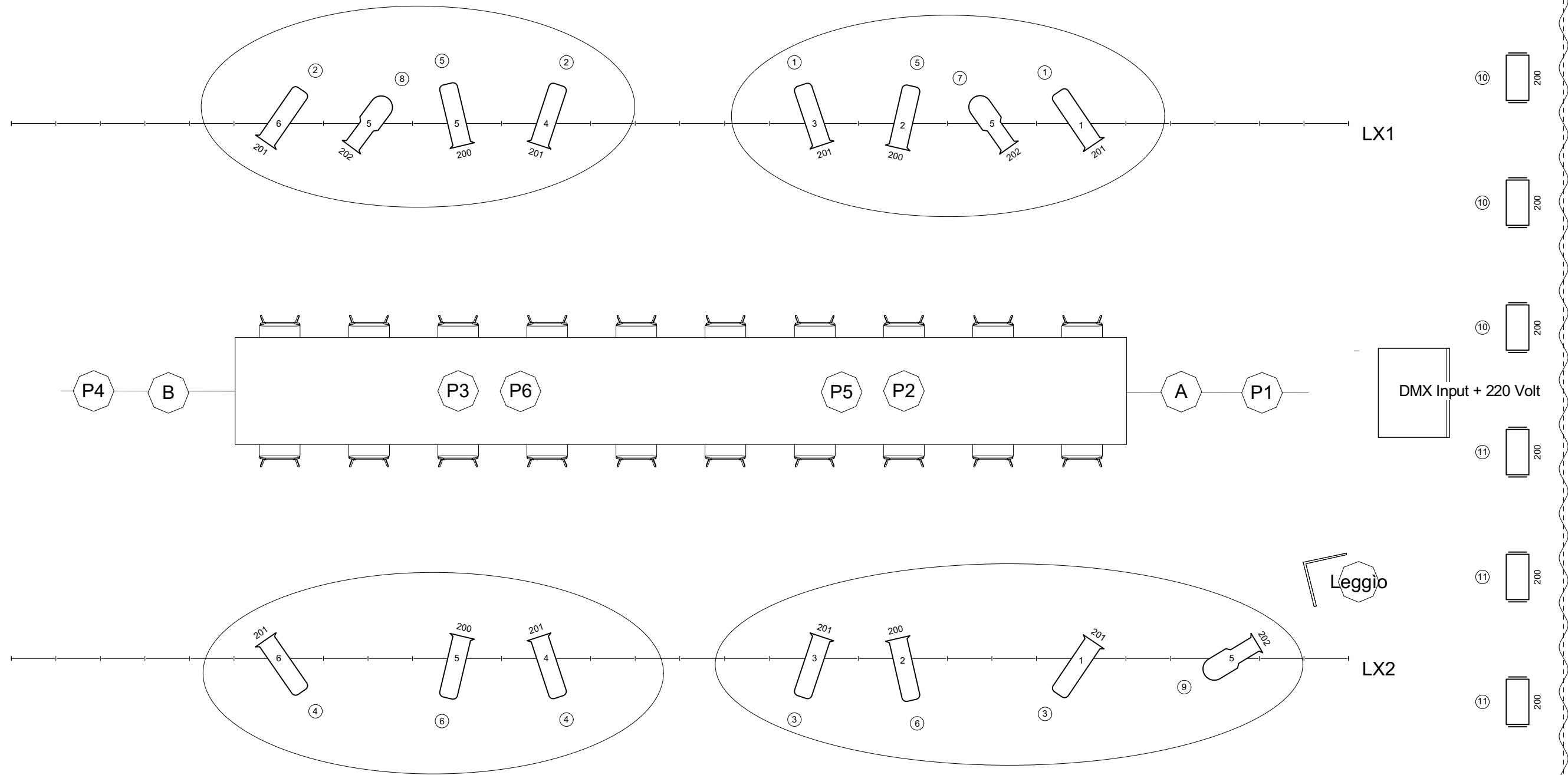
	PC @ 1kw	12
	Sagomatore @ 750w	3
	Domino @ 1kw	6

Gelatine

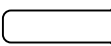
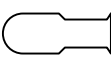
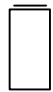
Color	Size	Count
200	PC	4
200	Domino	6
201	PC	8
202	Sagomatore	3



Salsa Saga Noir		
Compagnia Qui E Ora	Disegno Luci Marco Amedani	DATE 26/08/2021



Corpi illuminanti

	PC @ 1kw	12
	Sagomatore @ 750w	3
	Domino @ 1kw	6

Gelatine

Color	Size	Count
200	PC	4
200	Domino	6
201	PC	8
202	Sagomatore	3

Wind up



Salsa Saga Noir		
Compagnia Qui E Ora	Disegno Luci Marco Amedani	DATE 26/08/2021